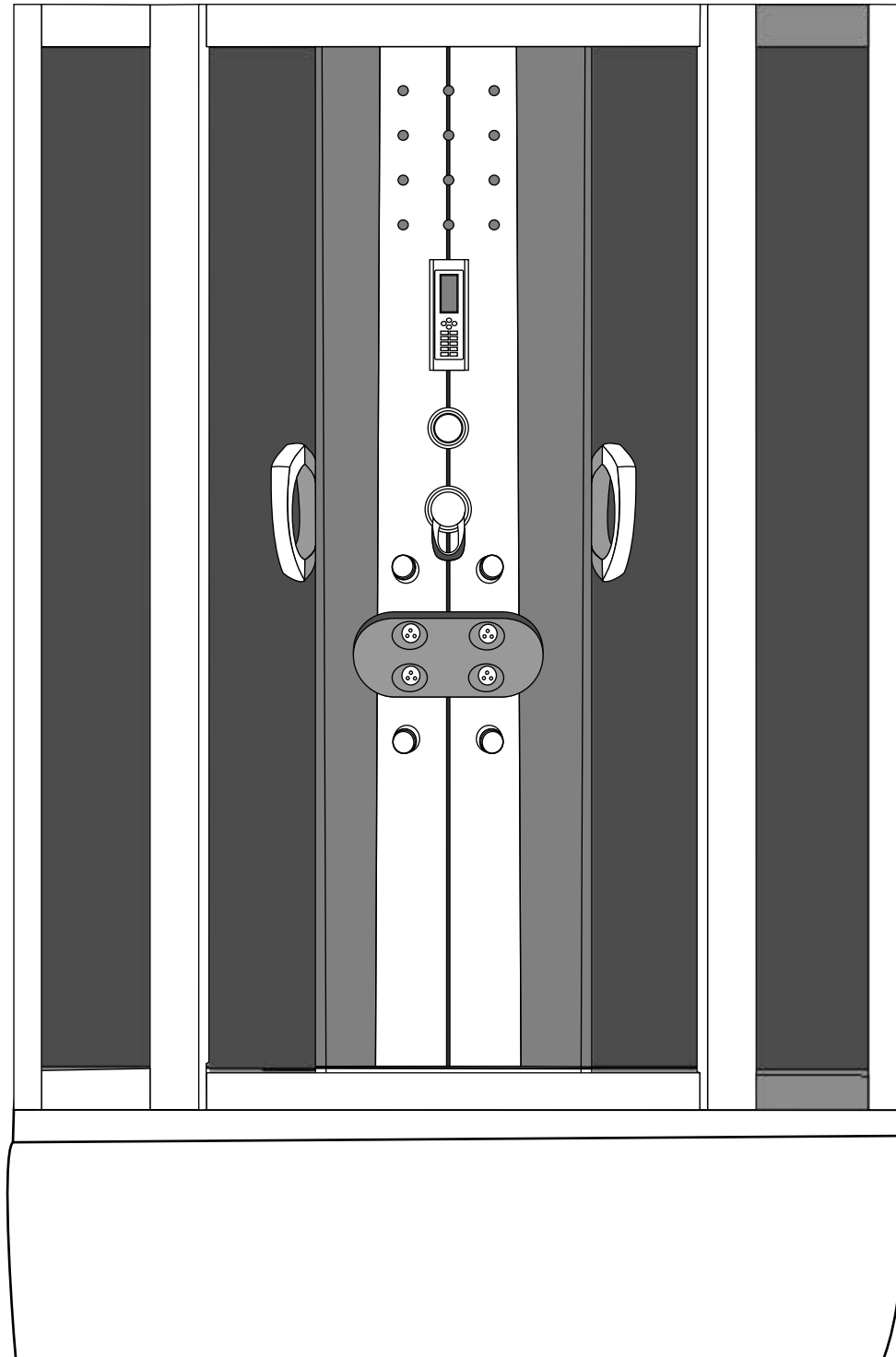


HX 412

Installation instructions



SIZE :145 *85 *217 CM

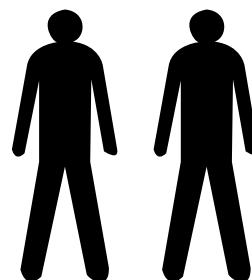
HX 412

Installation instructions

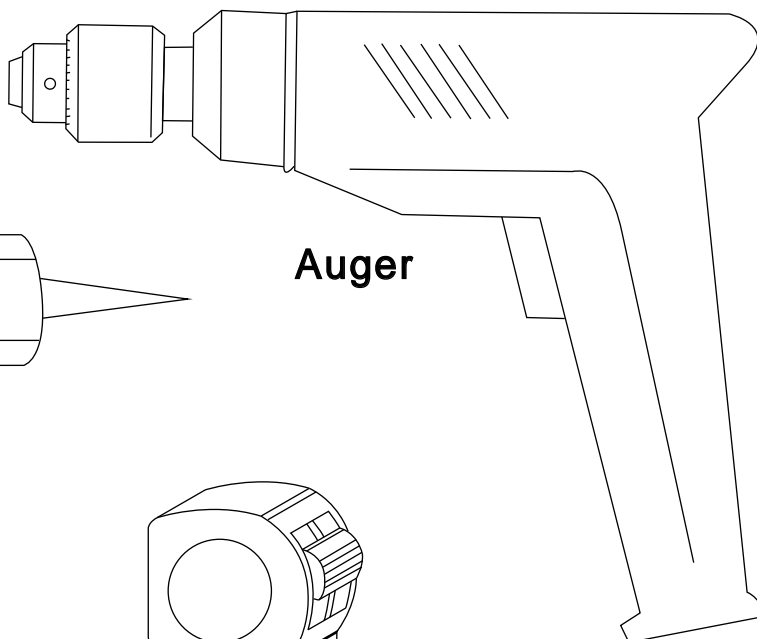
TOOLS REQUIRED(NOT SUPPLIED)

when you're ready to start,make sure that you have the following tools to hand,plenty of space and a clean dry area for assembly.

Two people are needed. Please note:although these instructions are comprehensive,We always recommend that a technically competent installer should undertake installation.

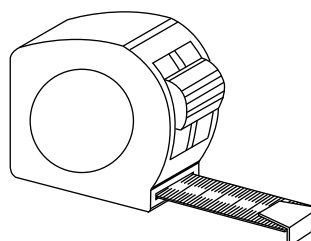
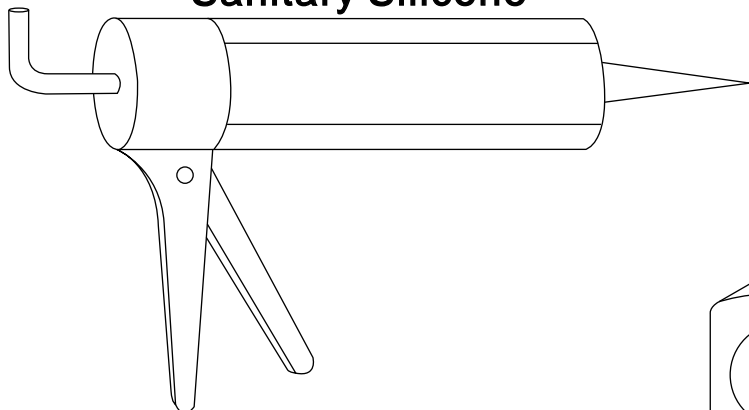


Drill beat head
4mm

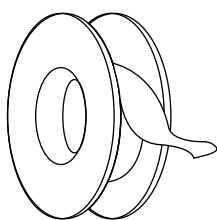


Auger

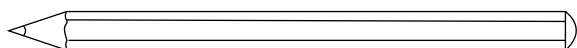
Sanitary Silicone



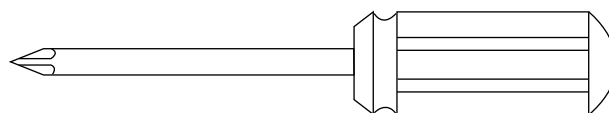
Tape measure



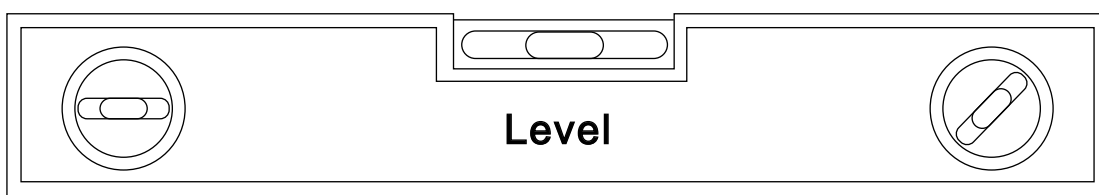
PTFE tape



Pencil



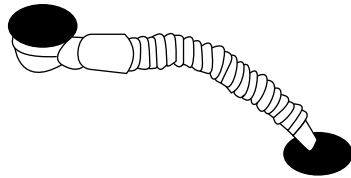
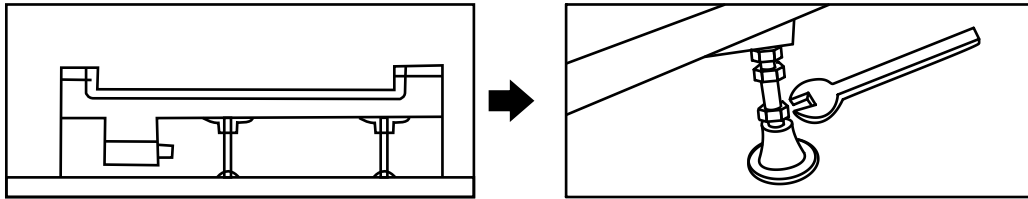
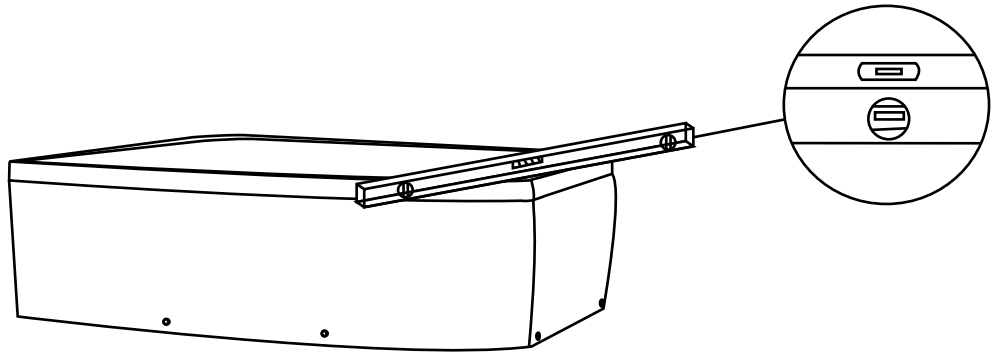
Magnetic crosshead schrewdriver



Level

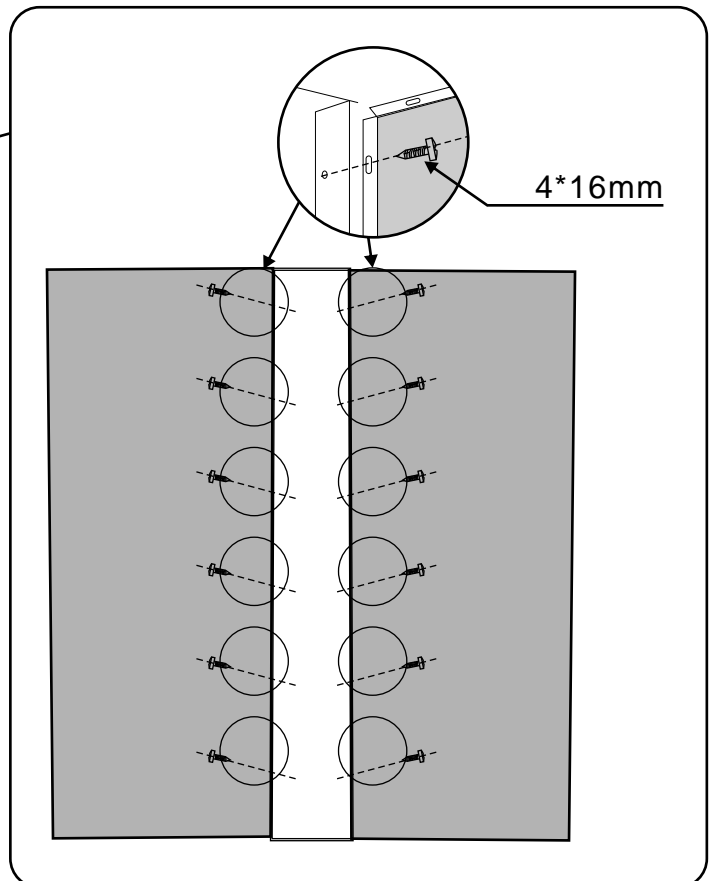
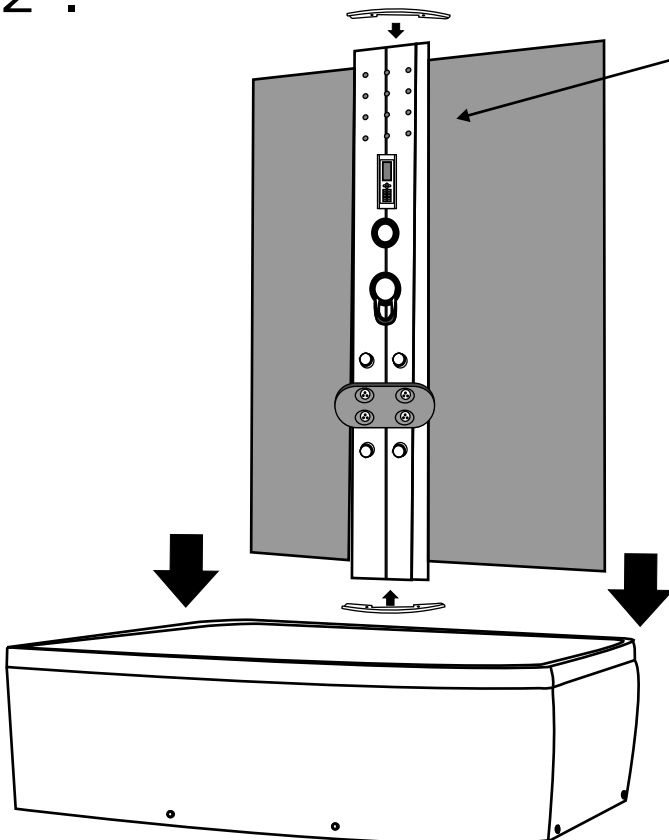
HX 412

Installation instructions



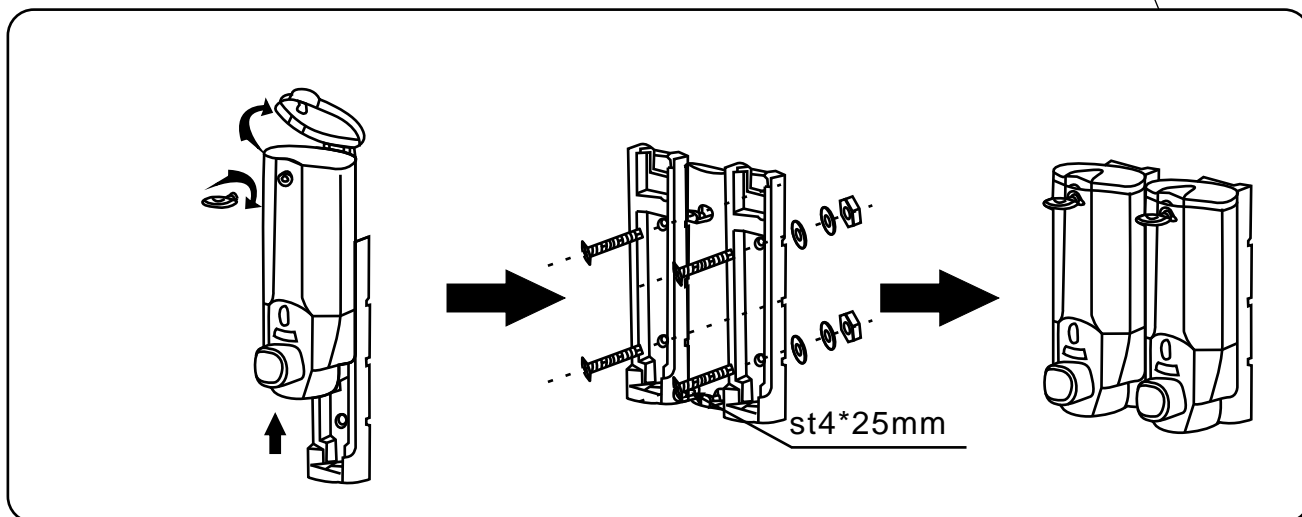
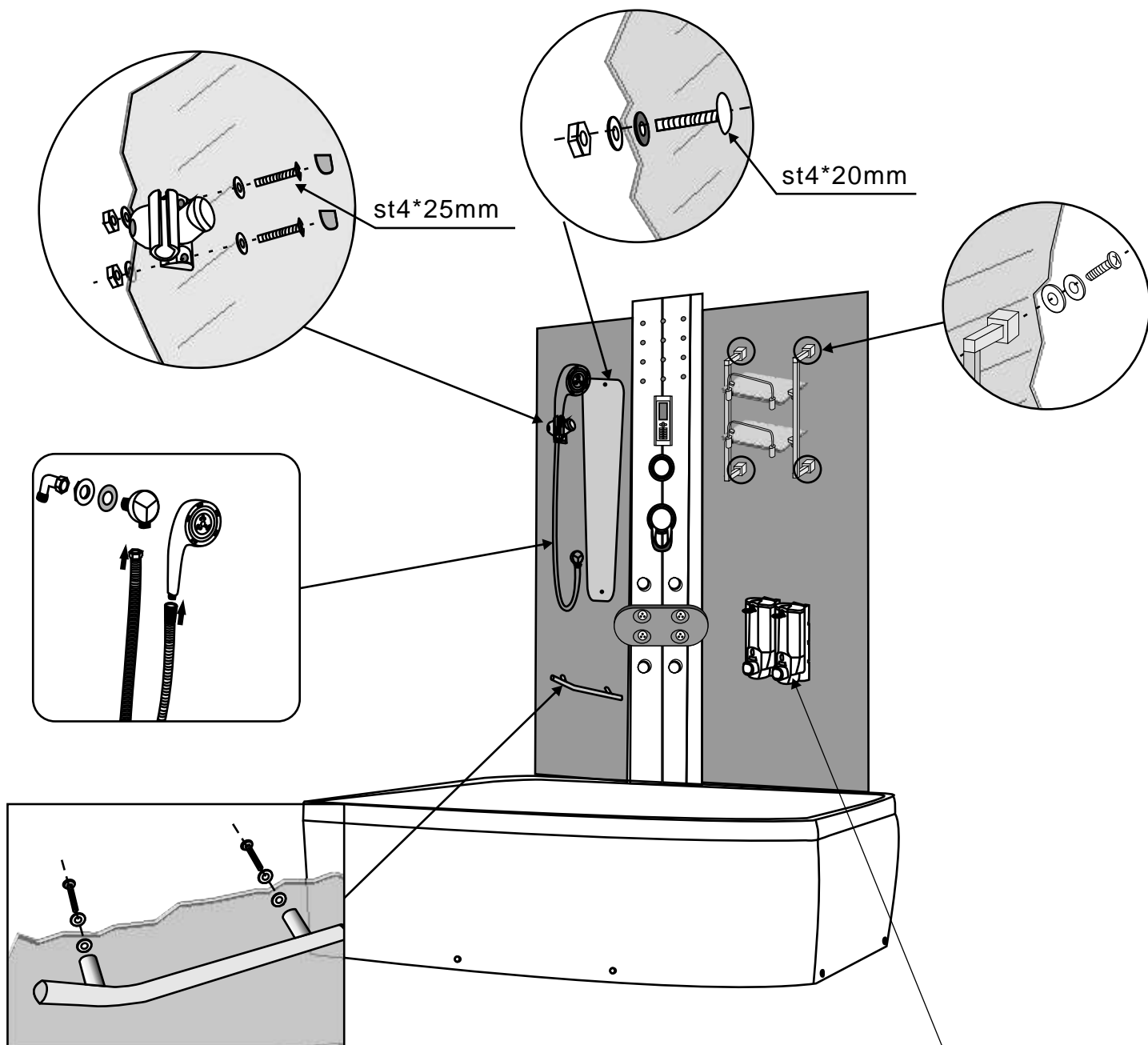
Lift the rear part of bottom basin , and then insert one end of the pipe into the drainage hole

2 .



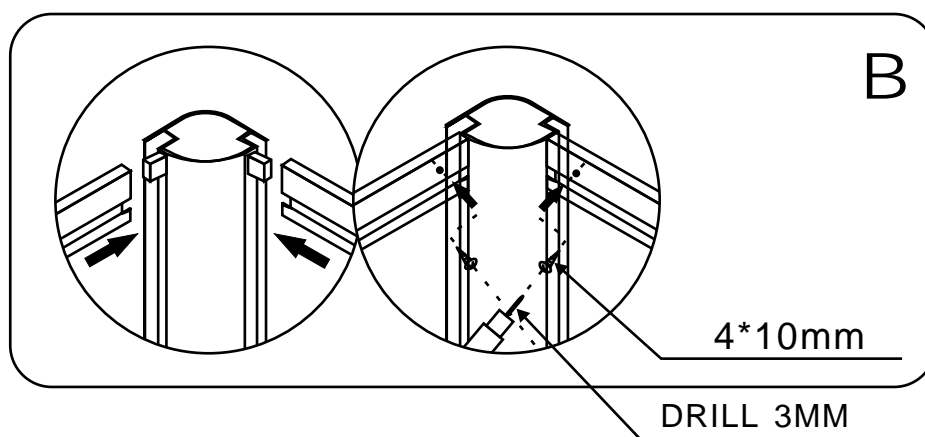
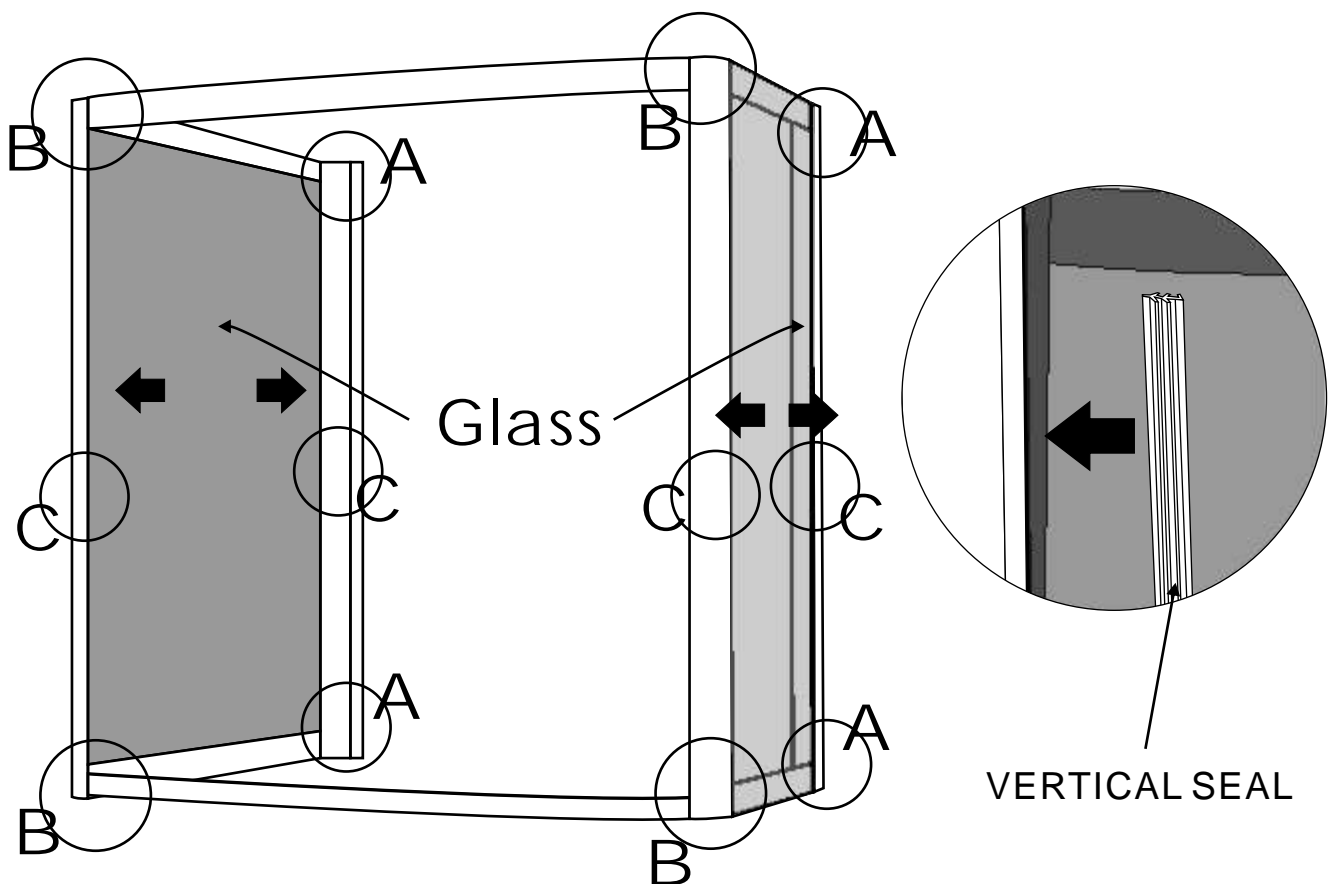
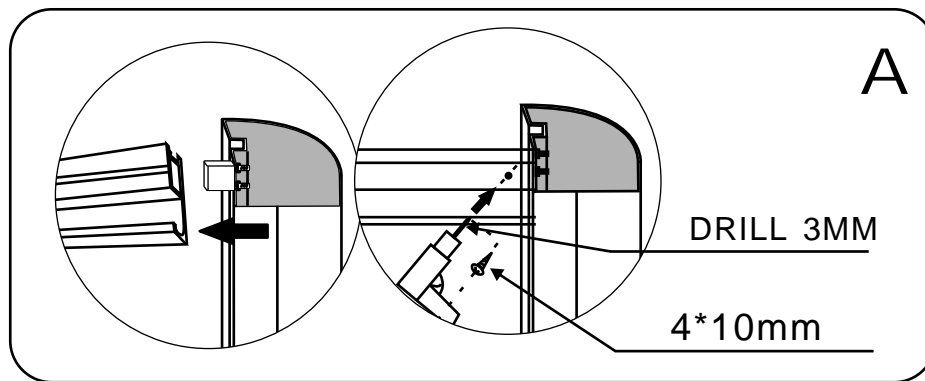
HX 412

Installation instructions



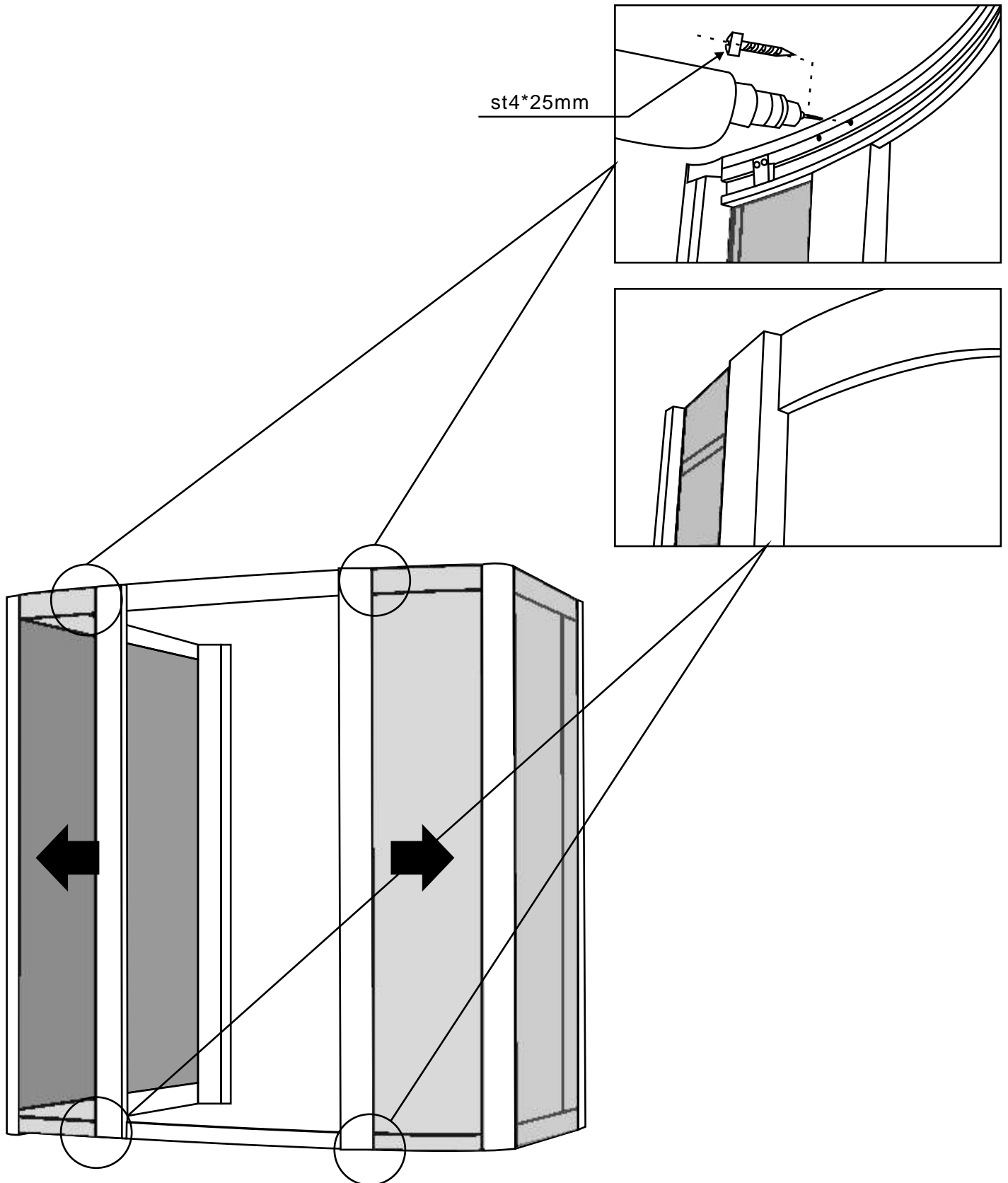
HX 412

Installation instructions



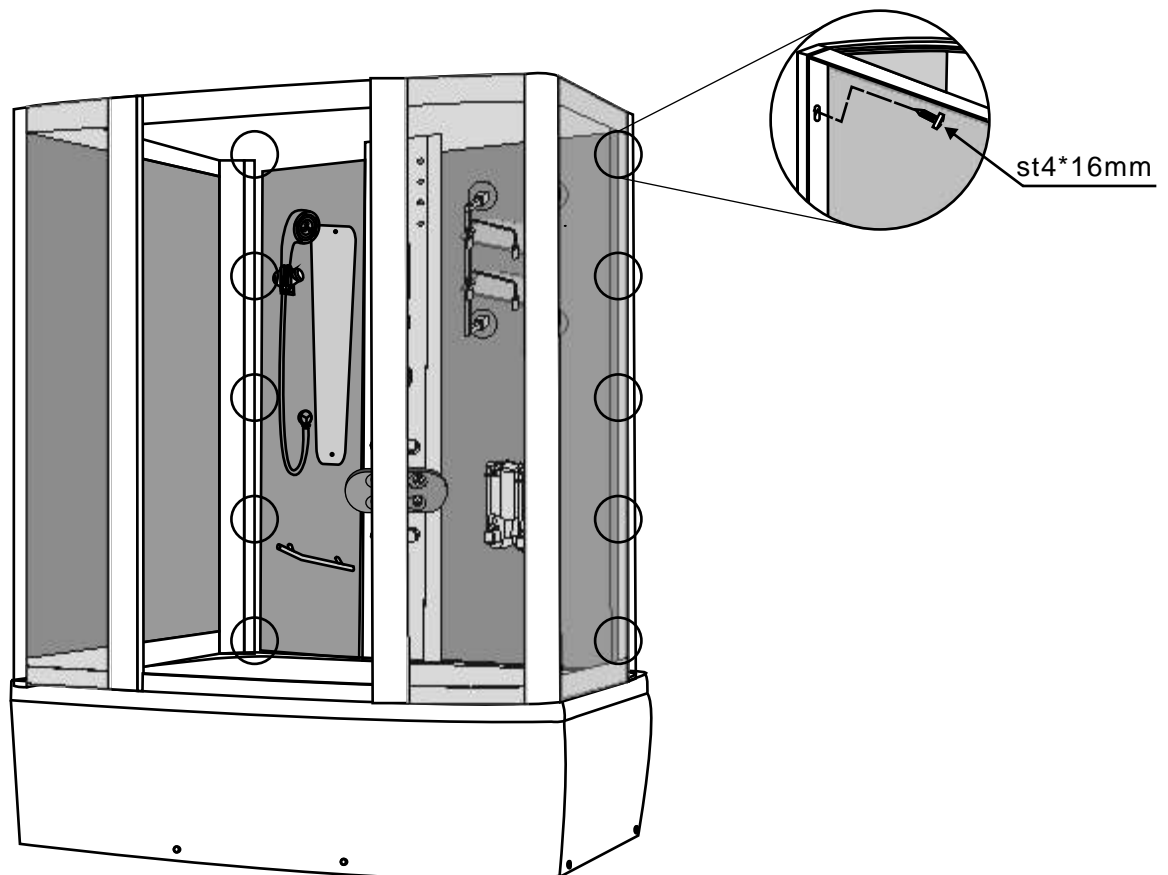
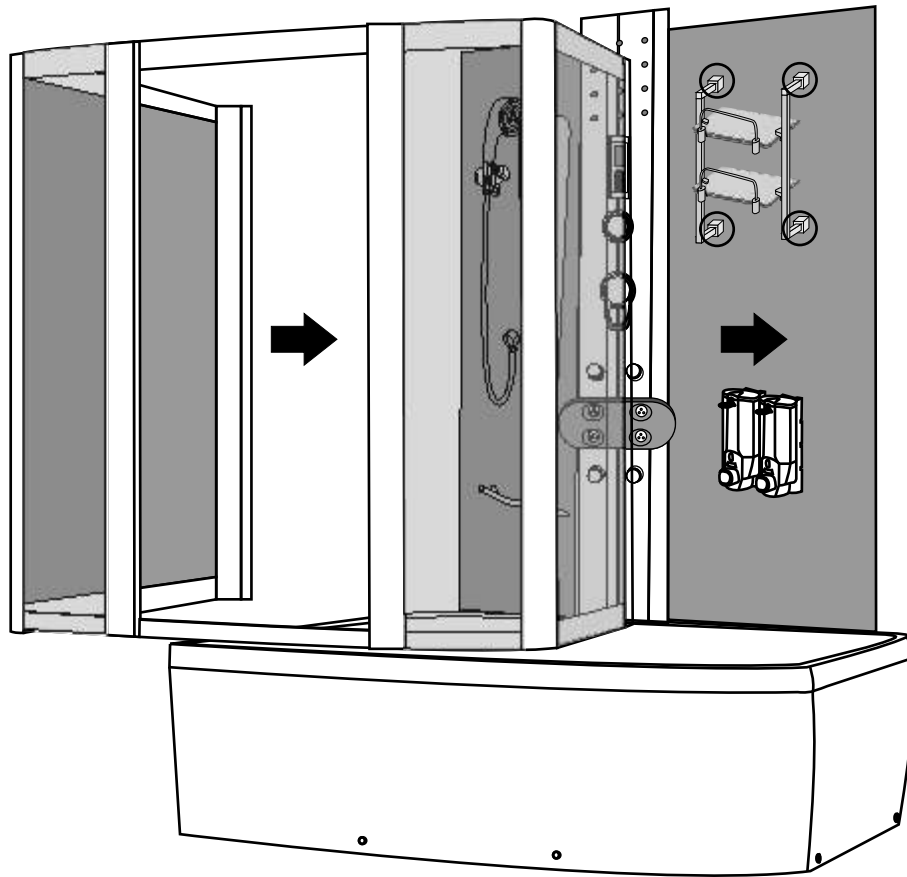
HX 412

Installation instructions



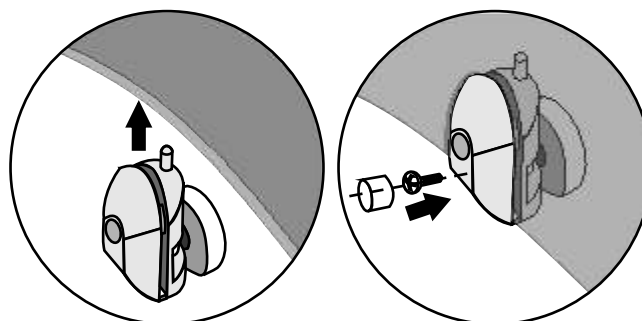
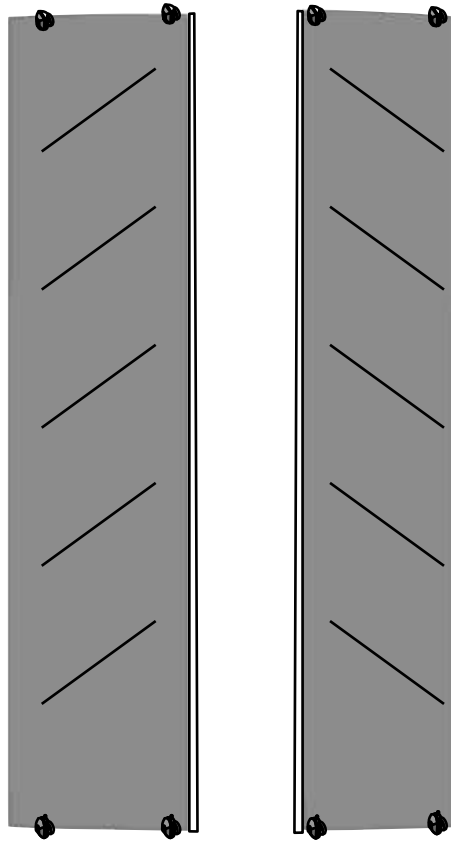
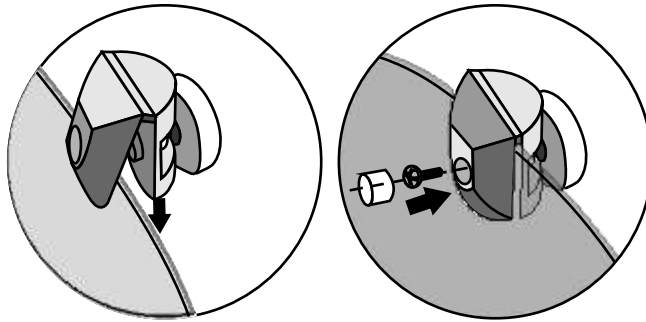
HX 412

Installation instructions



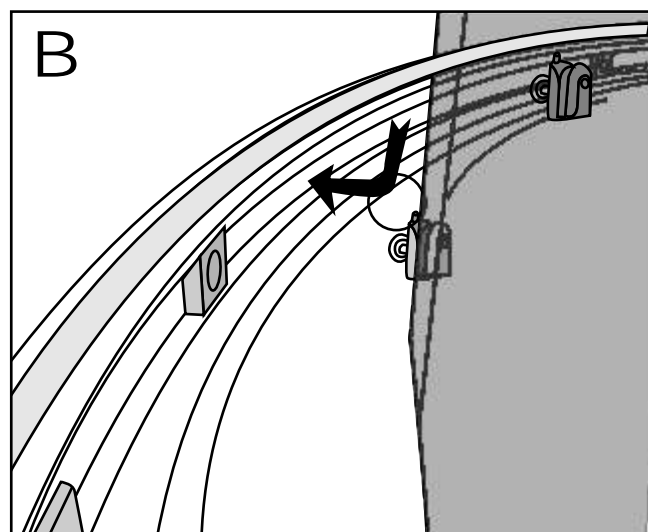
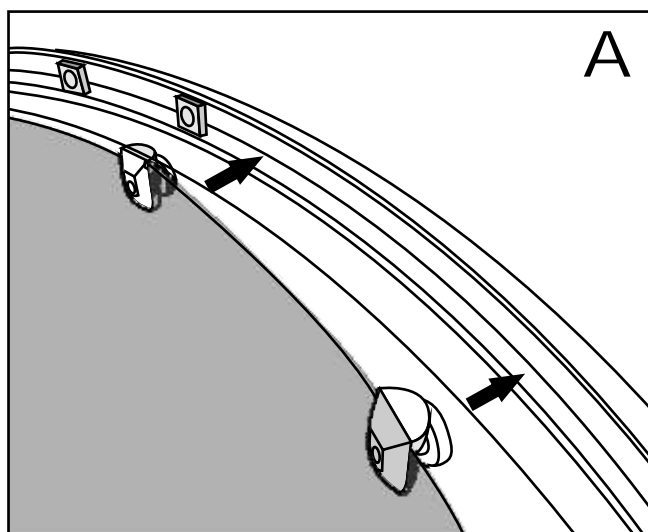
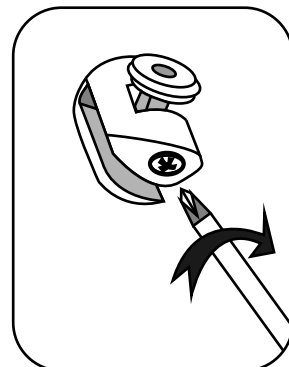
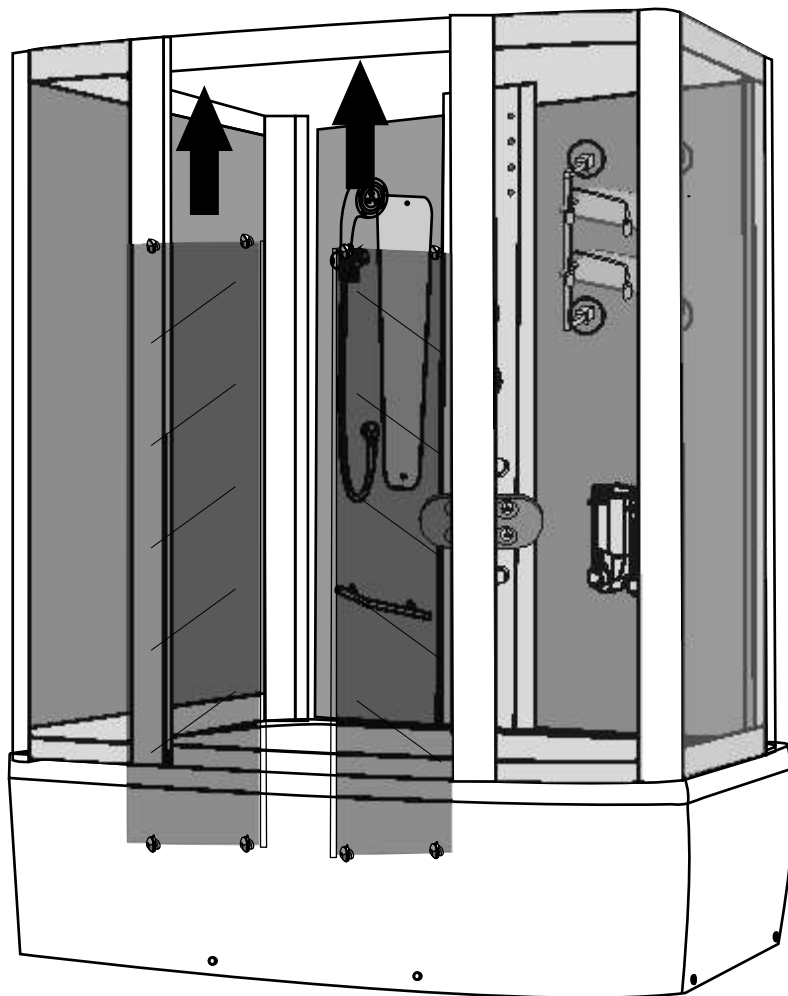
HX 412

Installation instructions



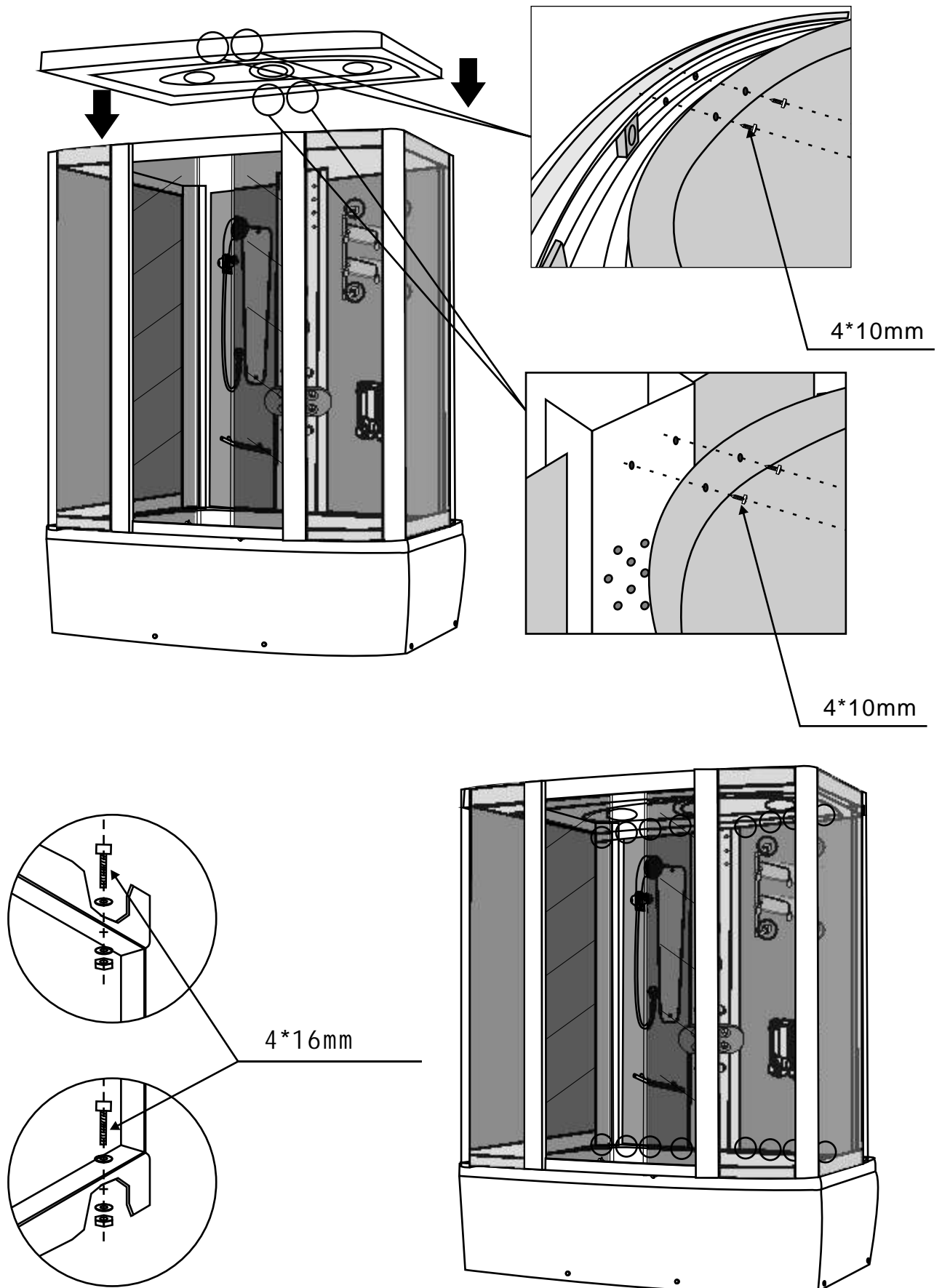
HX 412

Installation instructions



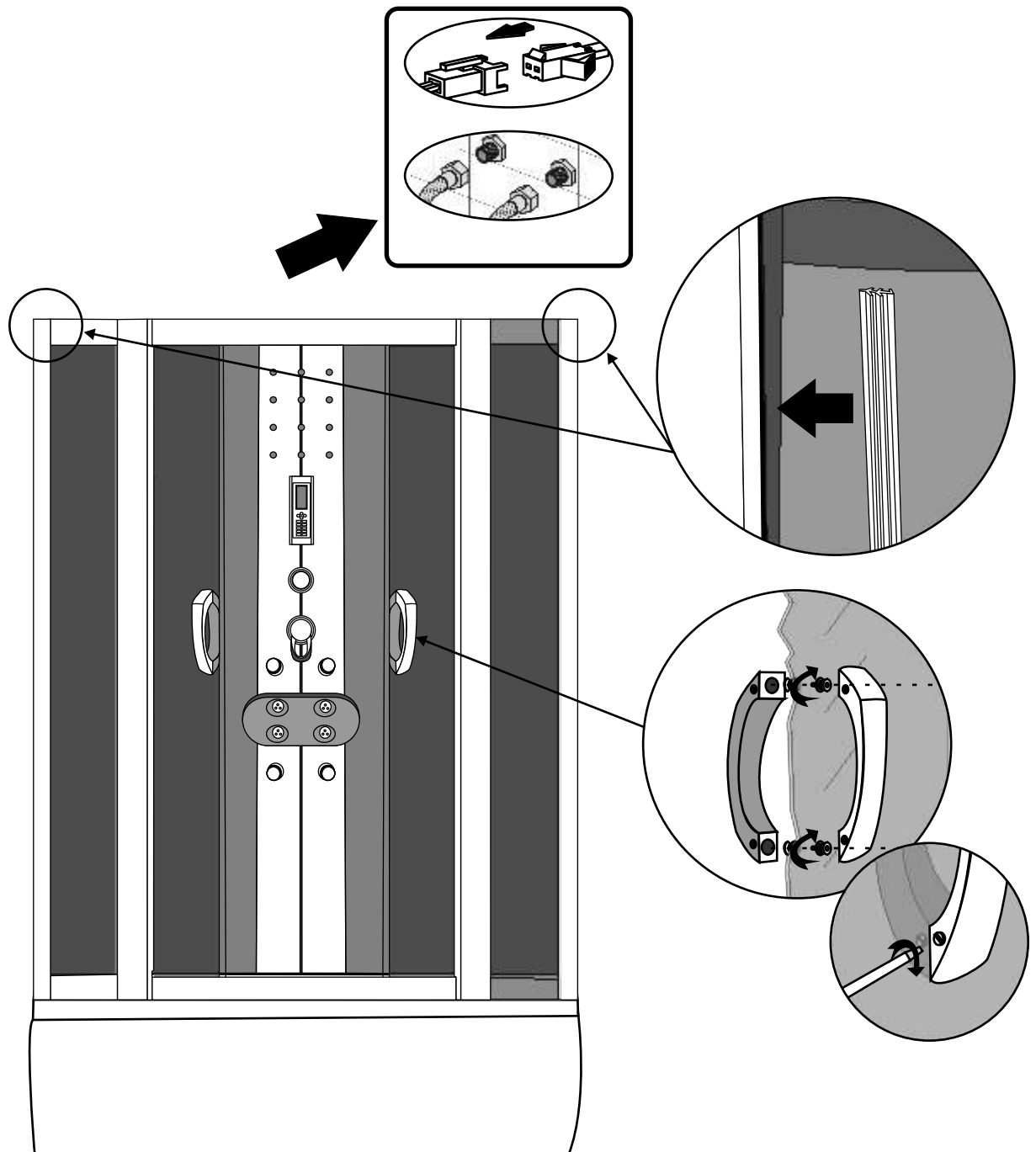
HX 412

Installation instructions



HX 412

Installation instructions



connect the electrical wire of bungalow, power and etc. correctly, connect the hose of head shower, hot water hose and cold water hose correctly, put the antenna to the top.