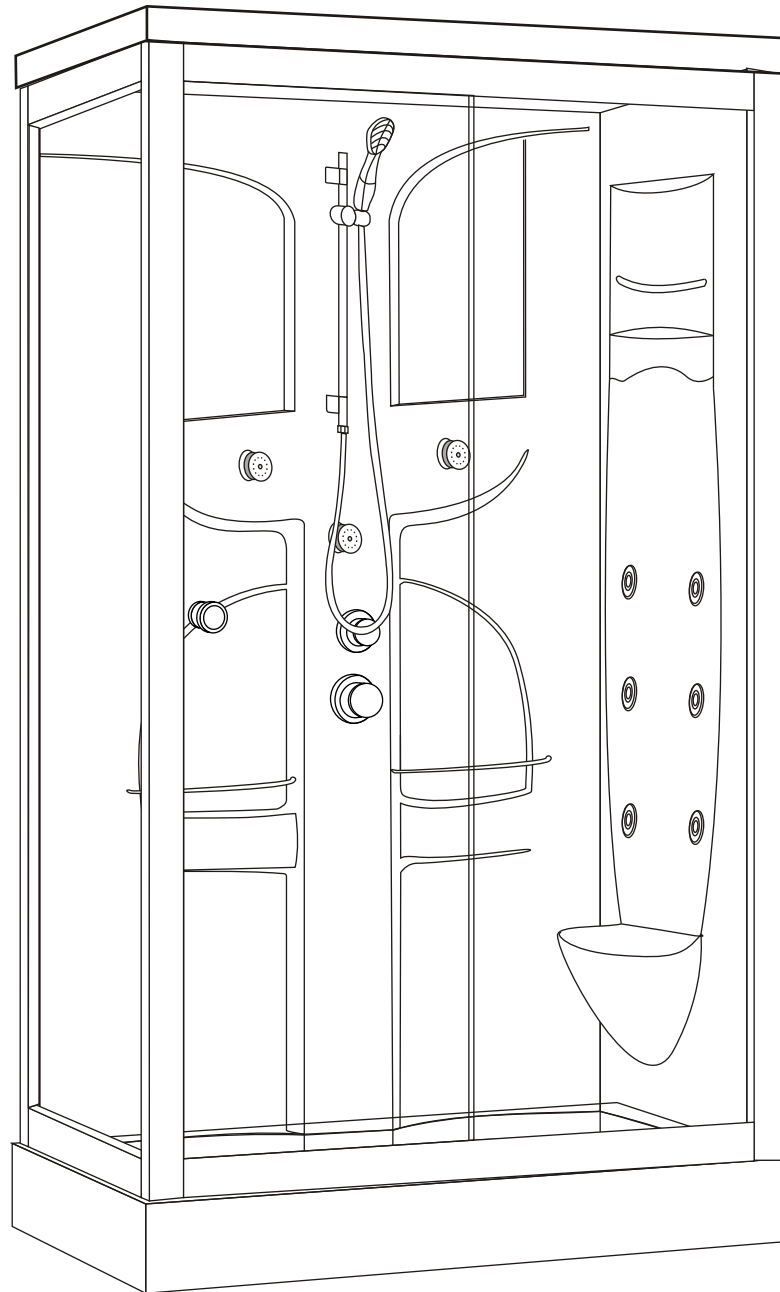


# 105B

## Installation instructions



SIZE : 120\*80\*215CM

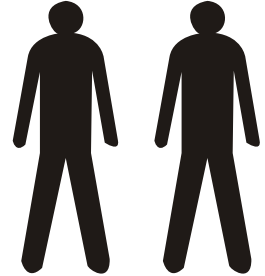
# 105B

## Installation instructions

### TOOLS REQUIRED(NOT SUPPLIED)

when you're ready to start,make sure that you have the following tools to hand,plenty of space and a clean dry area for assembly.

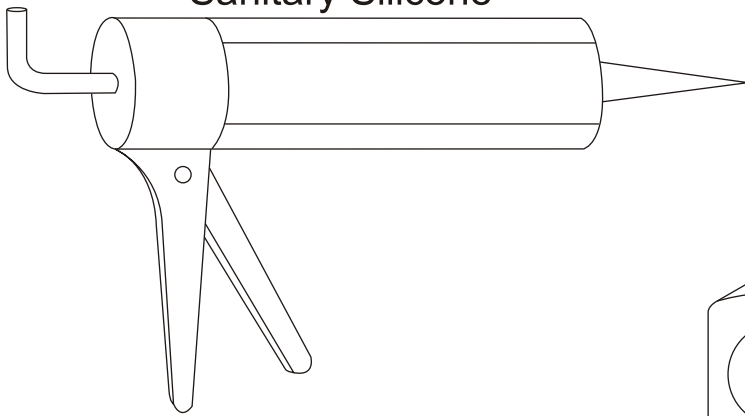
Two people are needed. Please note:although these instructions are comprehensive,We always recommend that a technically competent installer should undertake installation.



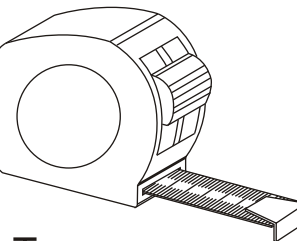
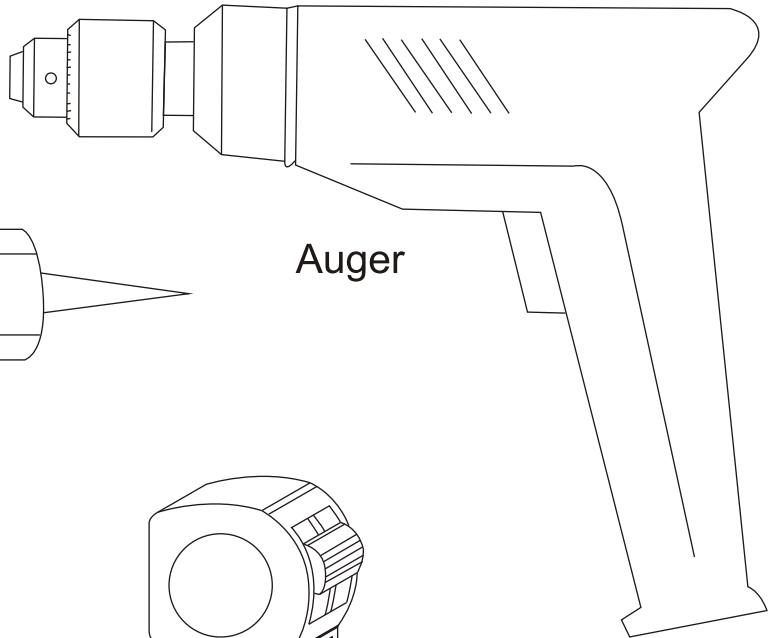
Drill beat head  
4mm



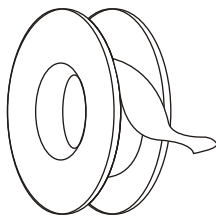
Sanitary Silicone



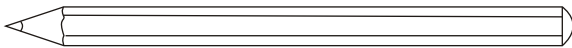
Auger



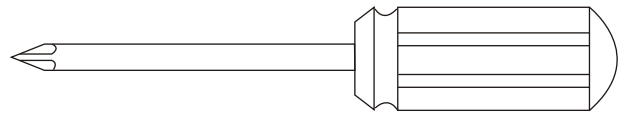
Tape measure



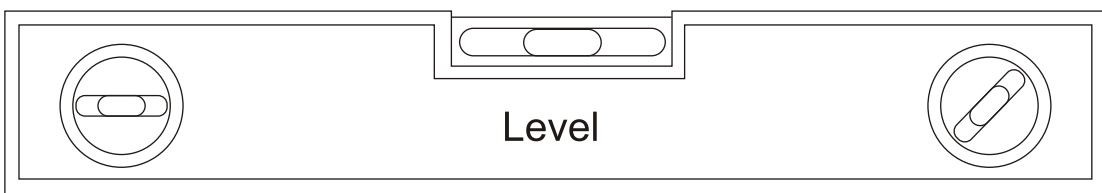
PTFE tape



Pencil



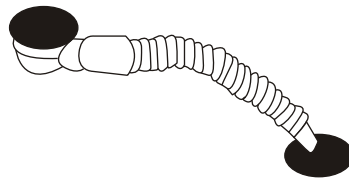
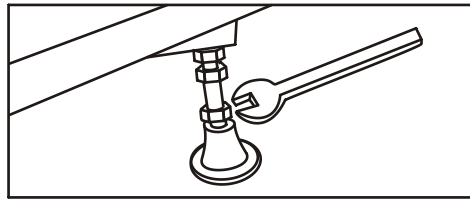
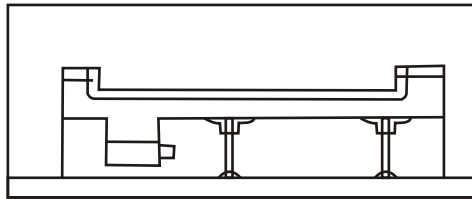
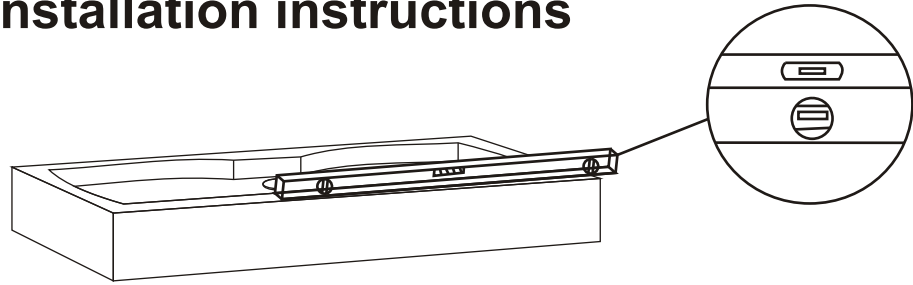
Magnetic crosshead schrewdriver



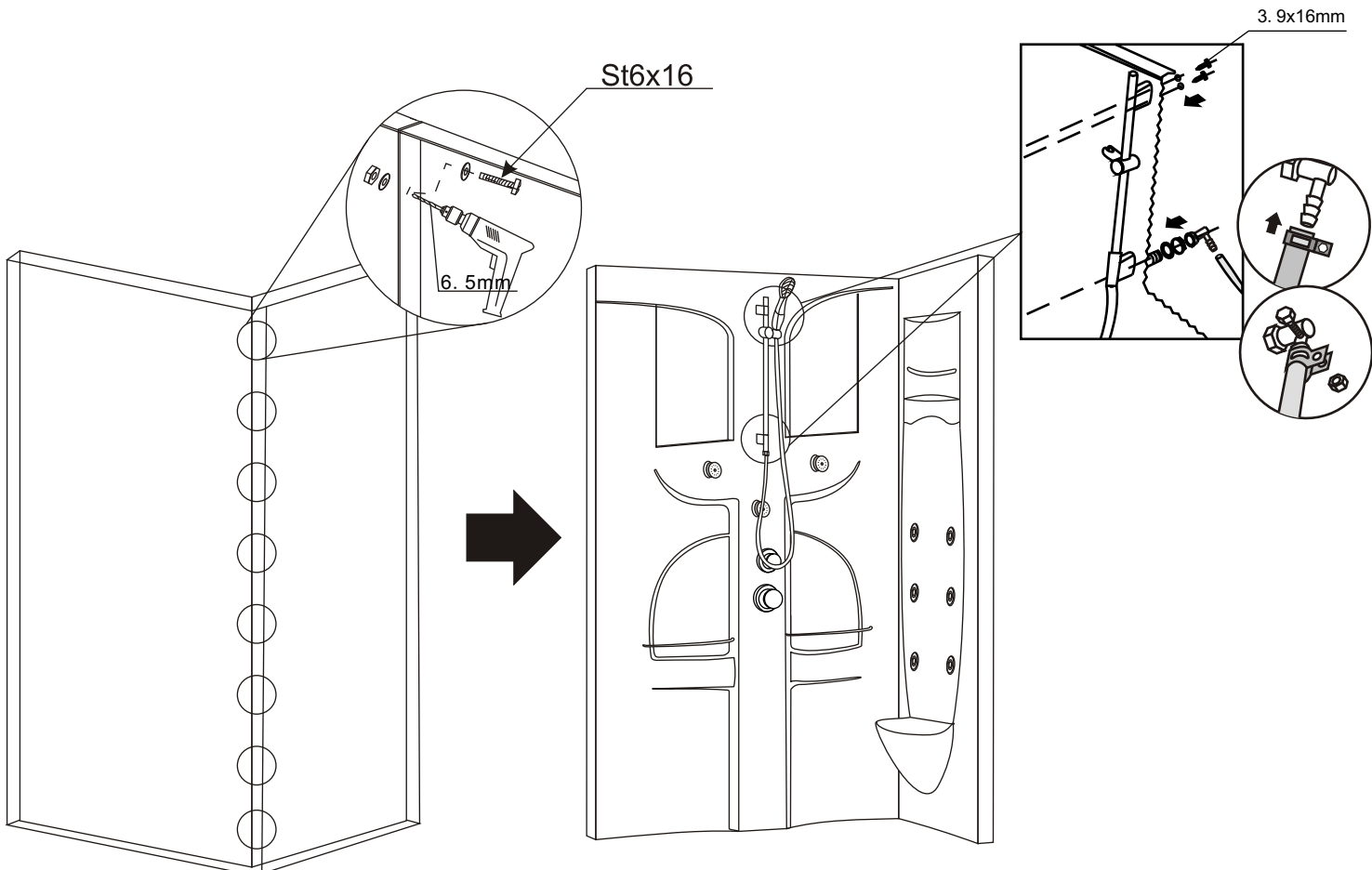
Level

# 105B

## Installation instructions

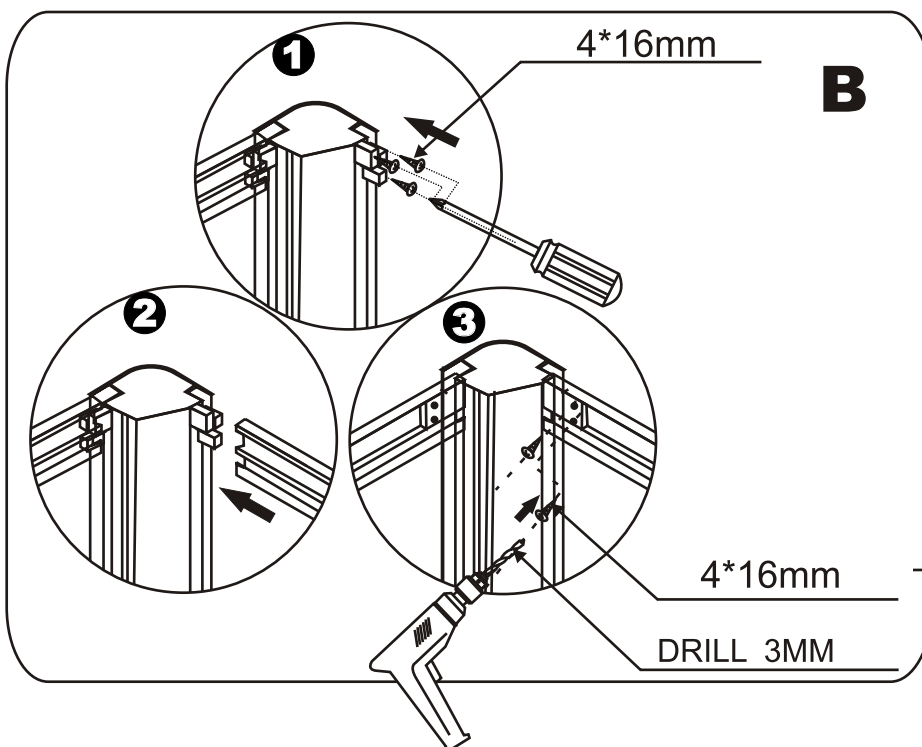
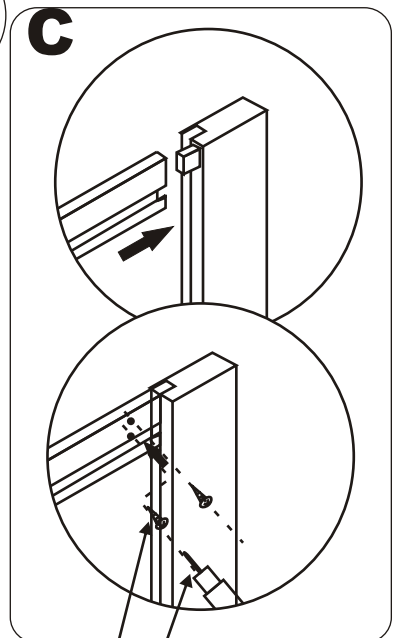
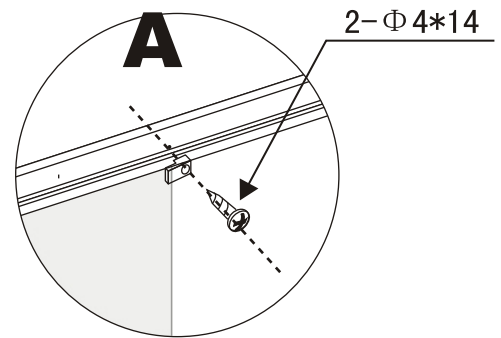
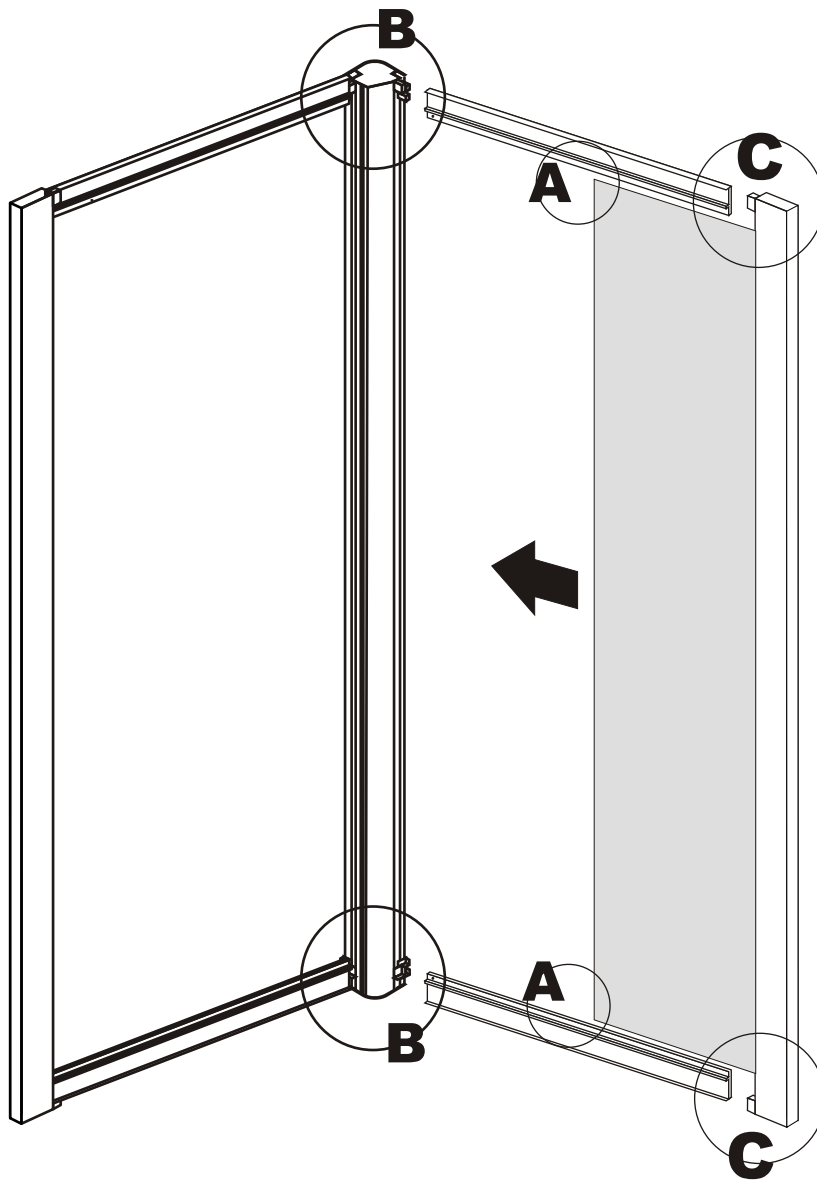


Lift the rear part of bottom basin, and then insert one end of the pipe into the drainage hole



# 105B

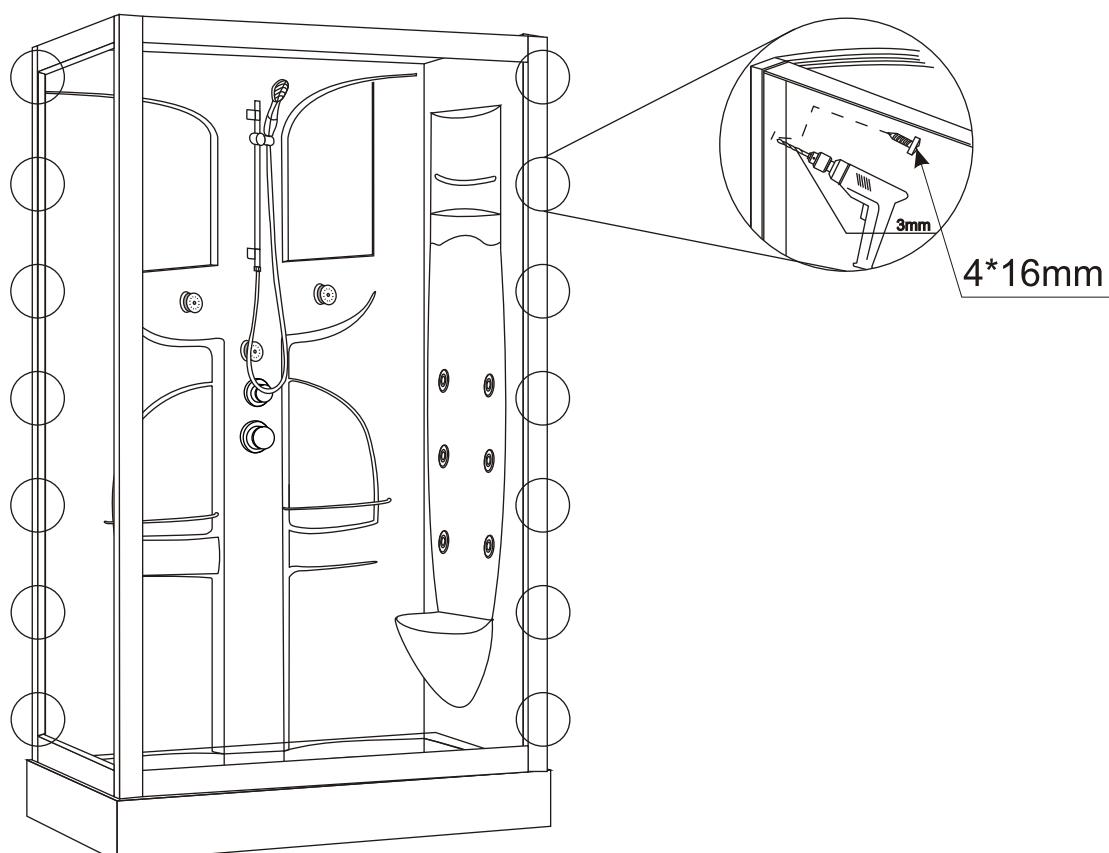
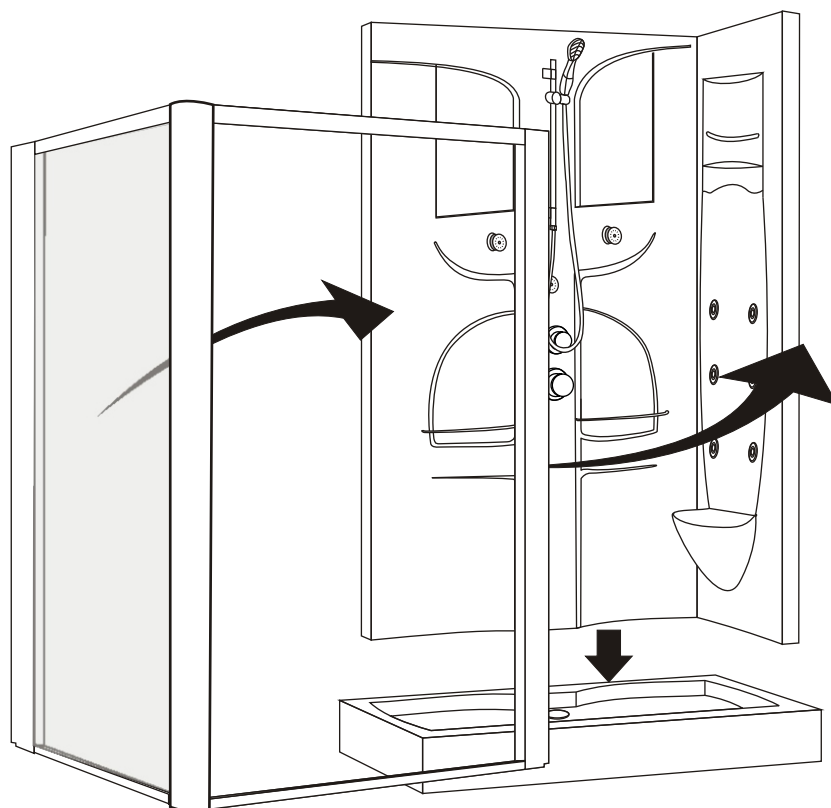
## Installation instructions



4\*16mm  
DRILL 3MM

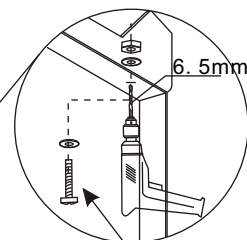
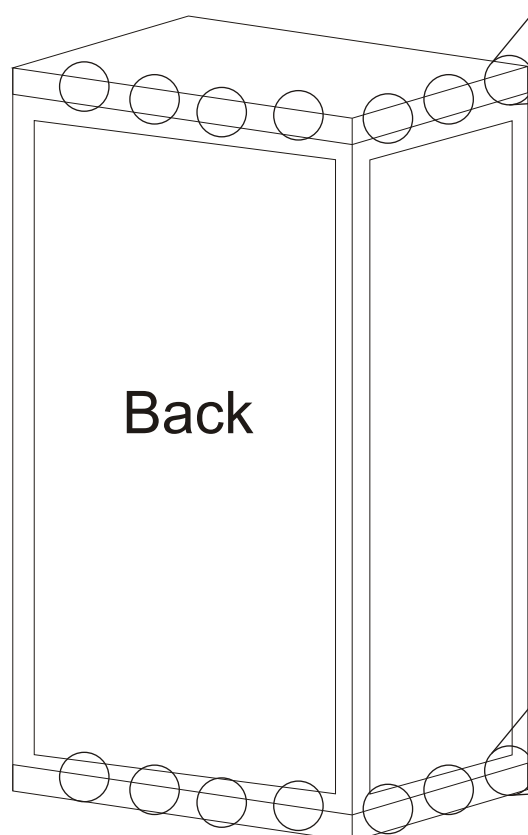
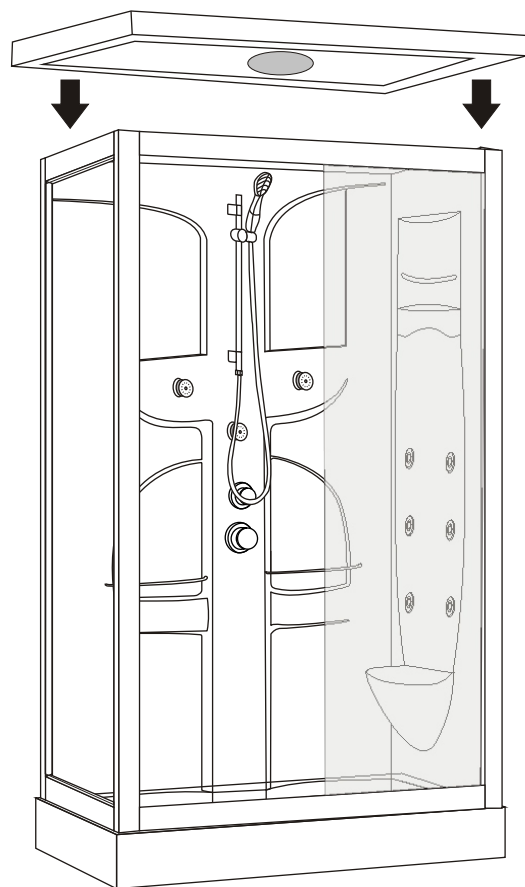
# 105B

## Installation instructions

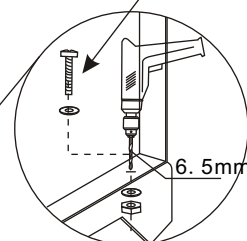


# 105B

## Installation instructions



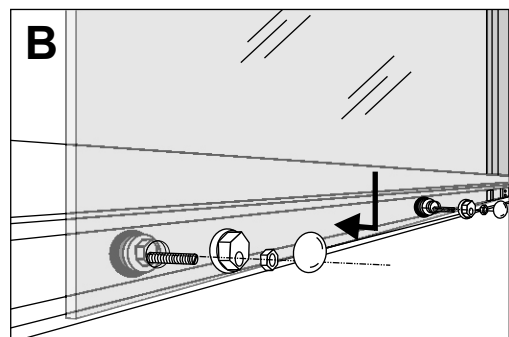
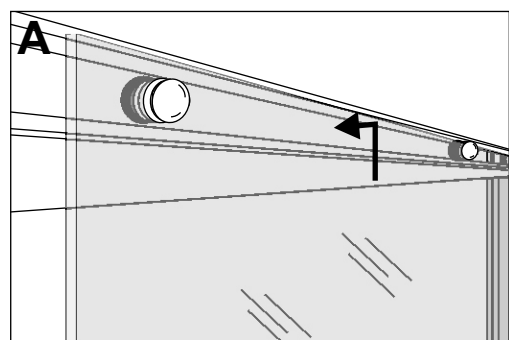
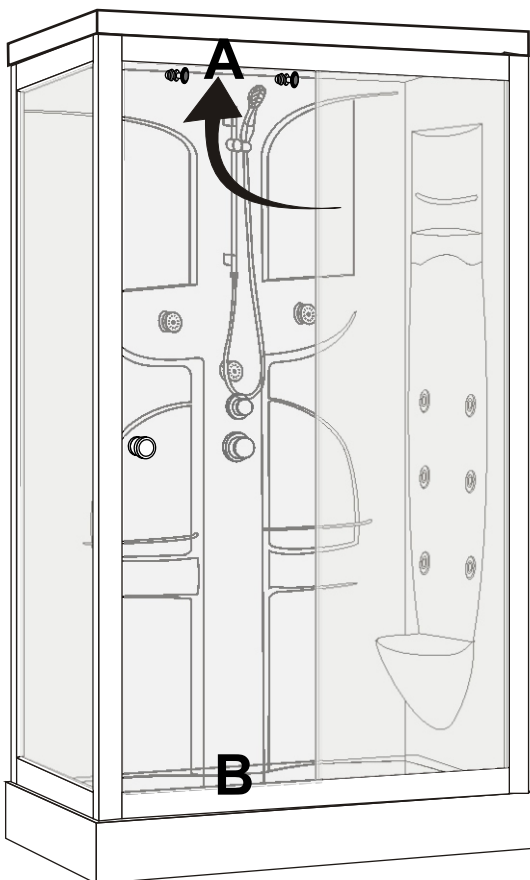
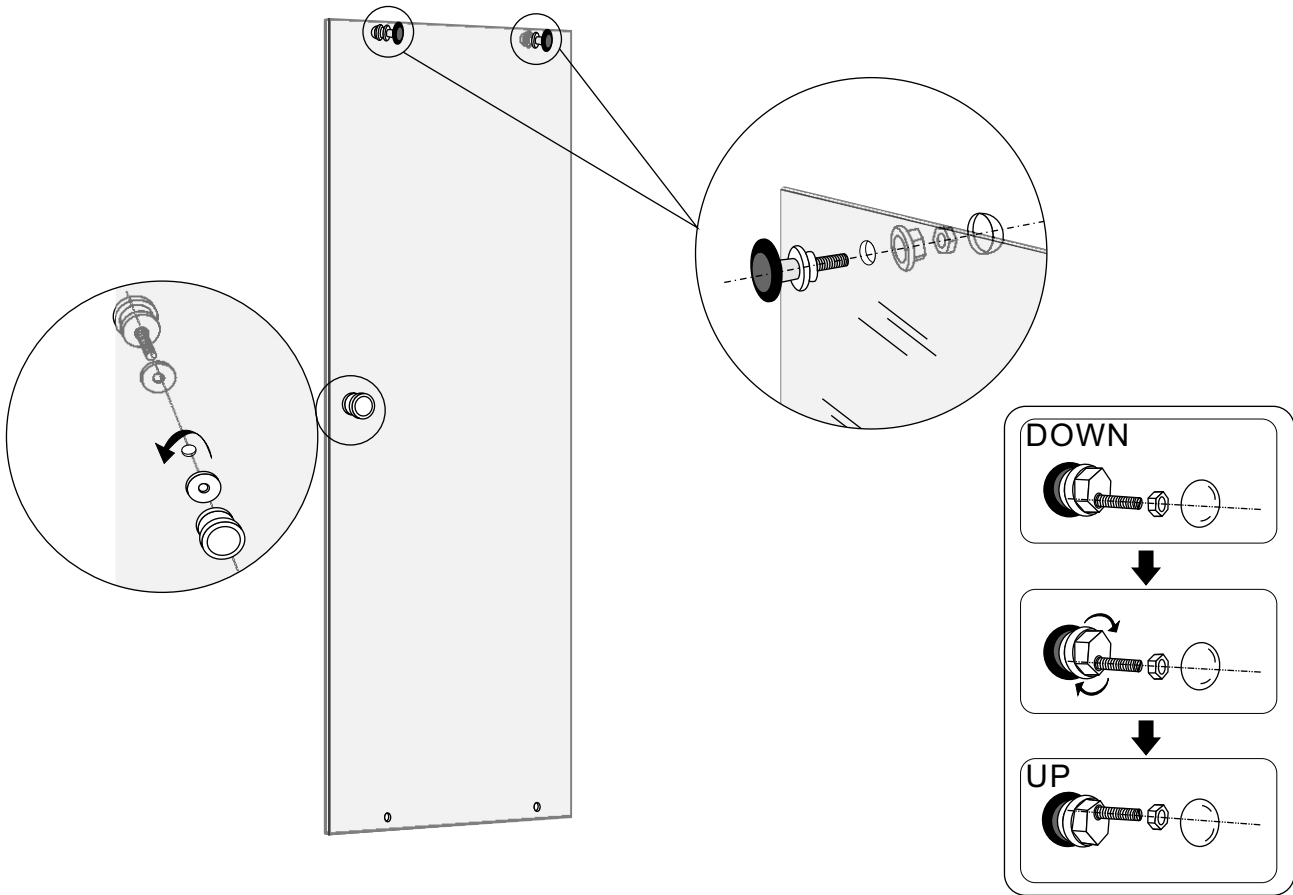
St6x16



St6x25

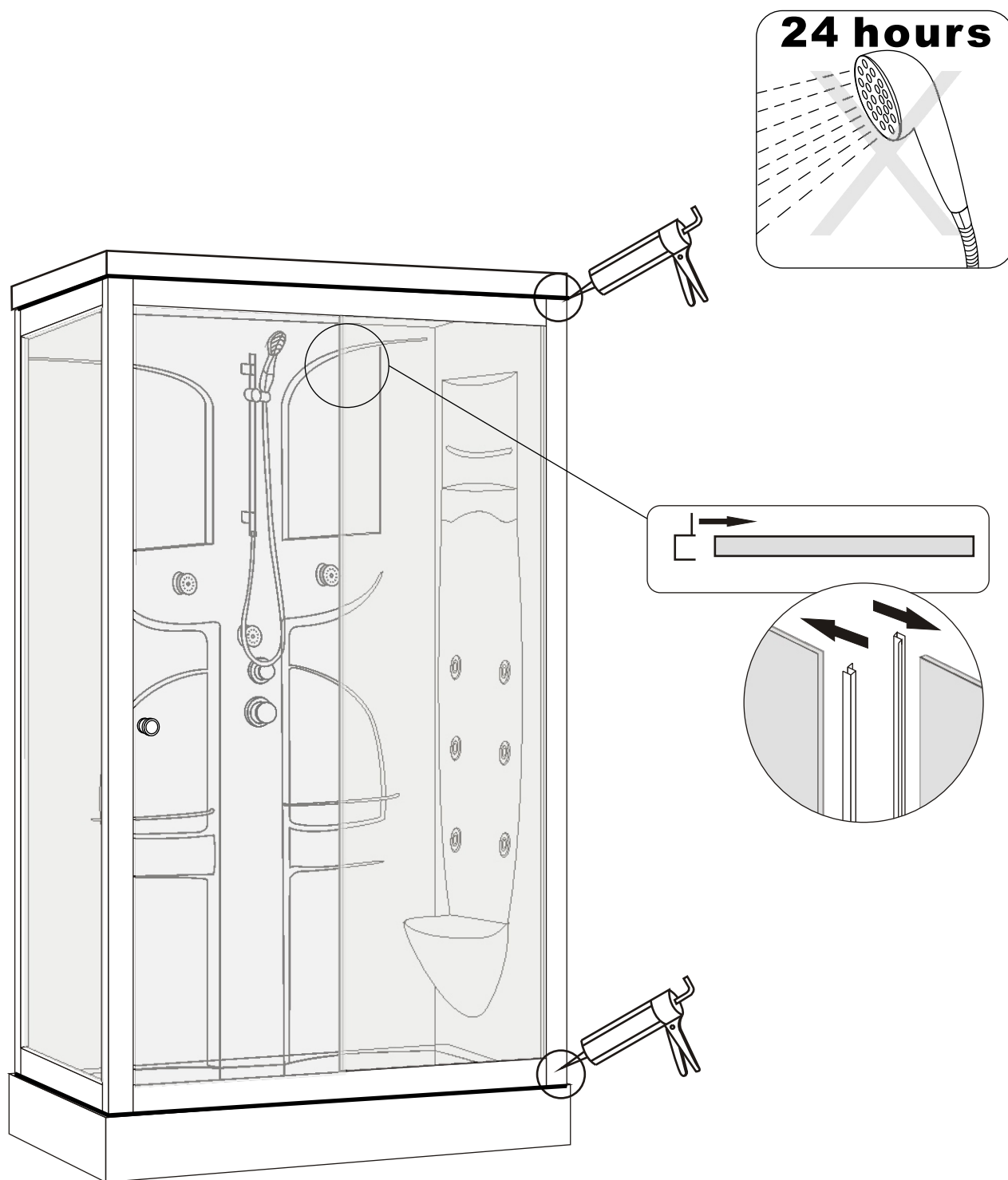
# 105B

## Installation instructions



# 105B

## Installation instructions



Warning: Don't use the shower enclosure until after at least 24 hours, so that the silica gel can be totally dry.